

PAZURE
Residences



Palm Jumeirah

ABOUT DUBAI

Dubai, one of seven emirates that make up the United Arab Emirates, is a cosmopolitan city that combines innovation and a modern lifestyle with traditional Arabian values. The multicultural city of Dubai is strategically located at the gateway between the East and West and has rapidly become one of the world's most sought-after destinations for business, living and tourism.

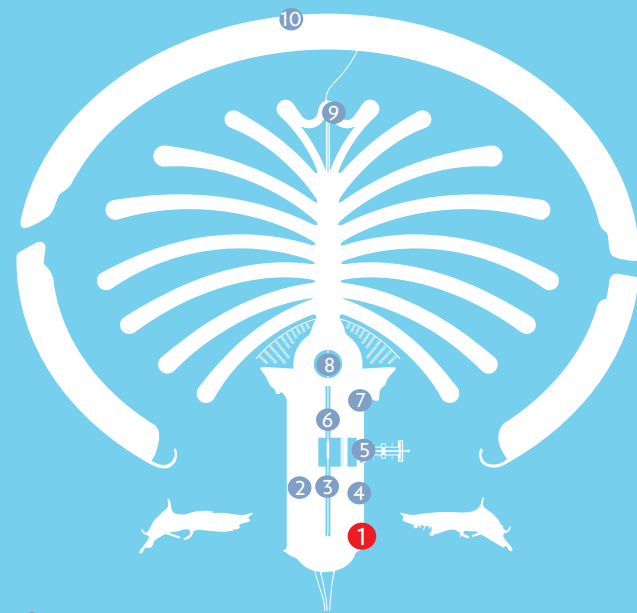
Dubai is home to some of the world's most breathtaking and ambitious developments, including the iconic Palm Jumeirah which has helped position Dubai as an attractive location for investment. With a variety of residential options, world-class shopping and entertainment as well as excellent facilities and infrastructure, Dubai offers residents an unrivalled quality of life.



LUXURY BEACHFRONT LIVING ON PALM JUMEIRAH

A stylish beachfront residential building on the eastern shoreline of Palm Jumeirah, Azure Residences offers idyllic beachside living. A thriving community of luxury beachfront apartments, the development also houses a selection of dining outlets with unparalleled views across the Arabian Gulf, Palm Jumeirah and Dubai's world-famous landmarks.

Azure Residences incorporates a variety of innovative, modern architectural features and are ready to move in now. The luxurious one and two bedroom apartments are complemented by a host of exclusive amenities designed to offer residents a remarkable beachfront lifestyle, including a rooftop gym, a sea-facing infinity pool and direct access to the beach.



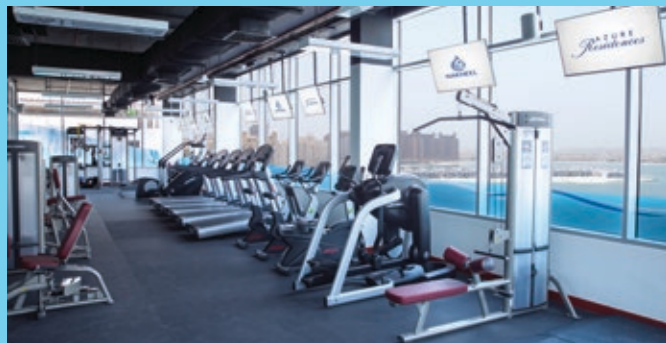
- | | |
|------------------------|-------------------|
| 1 Azure Residences | 6 Al Ittihad Park |
| 2 The Palm Promenade | 7 Club Vista Mare |
| 3 Golden Mile Galleria | 8 Nakheel Mall |
| 4 Shoreline Apartments | 9 The Pointe |
| 5 Palma Residences | 10 The Boardwalk |



URBAN AMENITIES AT YOUR DOORSTEP

Combining the simple elements of great living and superb attention to detail, the ten-storey complex features 170 one and two bedroom modern apartments, with expansive private terraces offering panoramic views of the water and Dubai skyline.

Whether purchasing as your primary residence, a holiday getaway or simply as a great investment, these exceptional beachfront homes offer a range of first-class amenities including premium home appliances. Azure Residences features a sea-facing infinity pool, a rooftop gym, beach access, ample car parking spaces, a supermarket and a choice of dining options.



AZURE BEACH CLUB

Azure Beach Club features superb leisure facilities including a state-of-the-art rooftop gymnasium with modern fitness equipment and inspiring views as well as a sea-facing infinity pool at the water's edge, which offers residents a stunning setting to unwind, right by the sea.



RESTAURANTS

Il Faro Trattoria and Lounge at the jetty offers authentic Italian cuisine in a stunning seafront setting with 360-degree views. Asian Kitchen serves asian fusion cuisine in a casual dining atmosphere, with indoor and outdoor seating.



BEACH ACCESS

Residents can enjoy the convenience of direct access to the beach.



SUPERMARKET

Situated at ground level of Azure Residences, the supermarket offers residents the convenience of shopping for everyday essentials, at their doorstep.

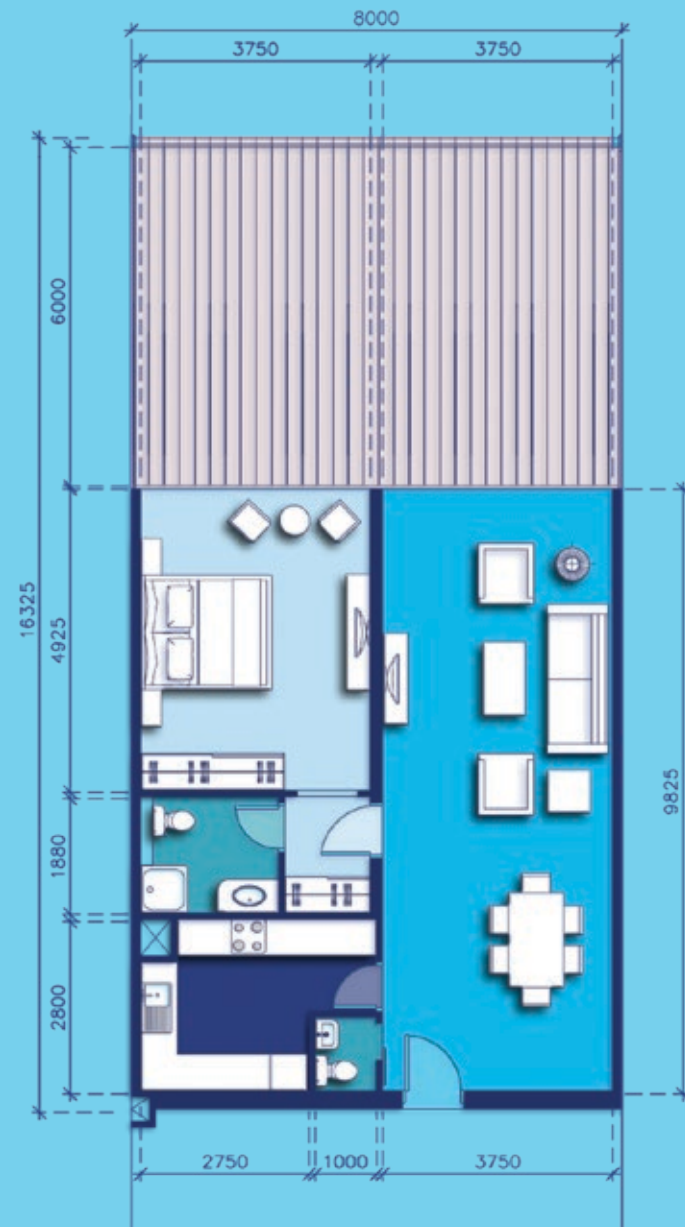




AZURE
Residences

1-BEDROOM A

TYPICAL APARTMENT



 ENTRANCE LOBBY & RECEPTION

 KITCHENETTE

 BEDROOM & DRESSING

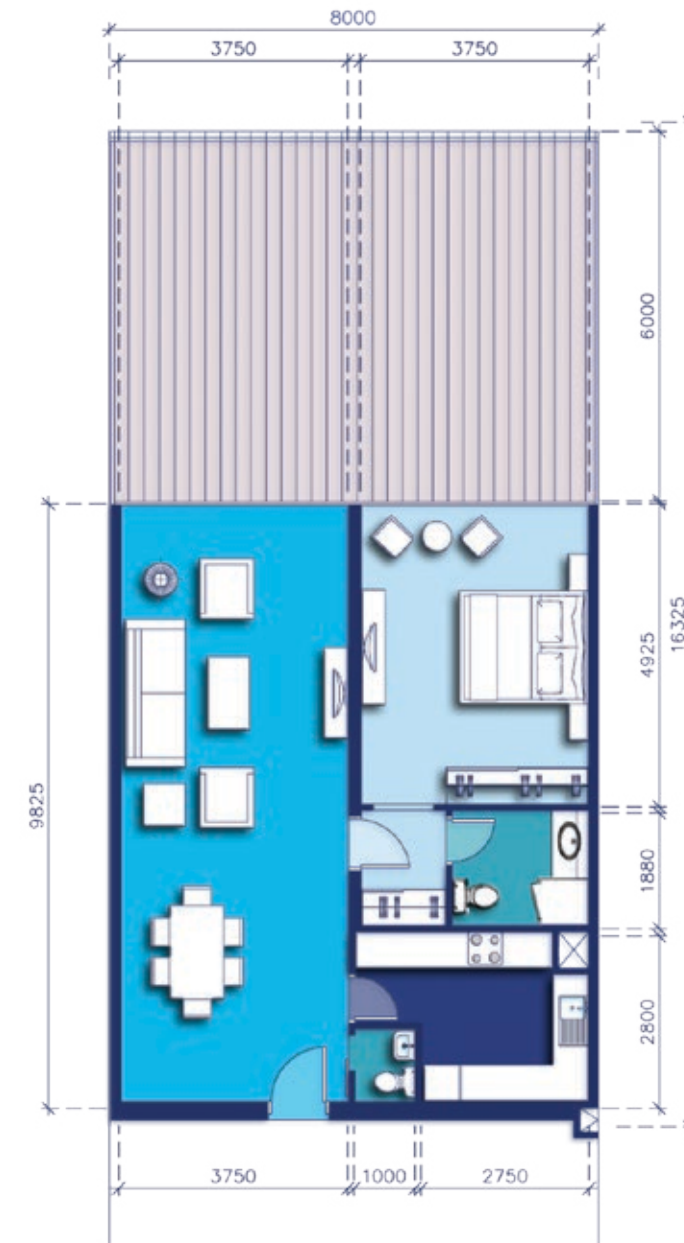
 BATHROOM

TERRACE	50 m ²
RECEPTION & DINING	42 m ²
BEDROOM	20 m ²
BATHROOM	5 m ²
KITCHEN	11 m ²
GUEST TOILET	2 m ²
AREA	80 m ²
AREA WITH TERRACE	130 m ²

Numbers, square footage and floor plans are approximate. Final dimensions, square footage and floor plans may vary.

1-BEDROOM B

TYPICAL APARTMENT



 ENTRANCE LOBBY & RECEPTION

 KITCHENETTE

 BEDROOM & DRESSING

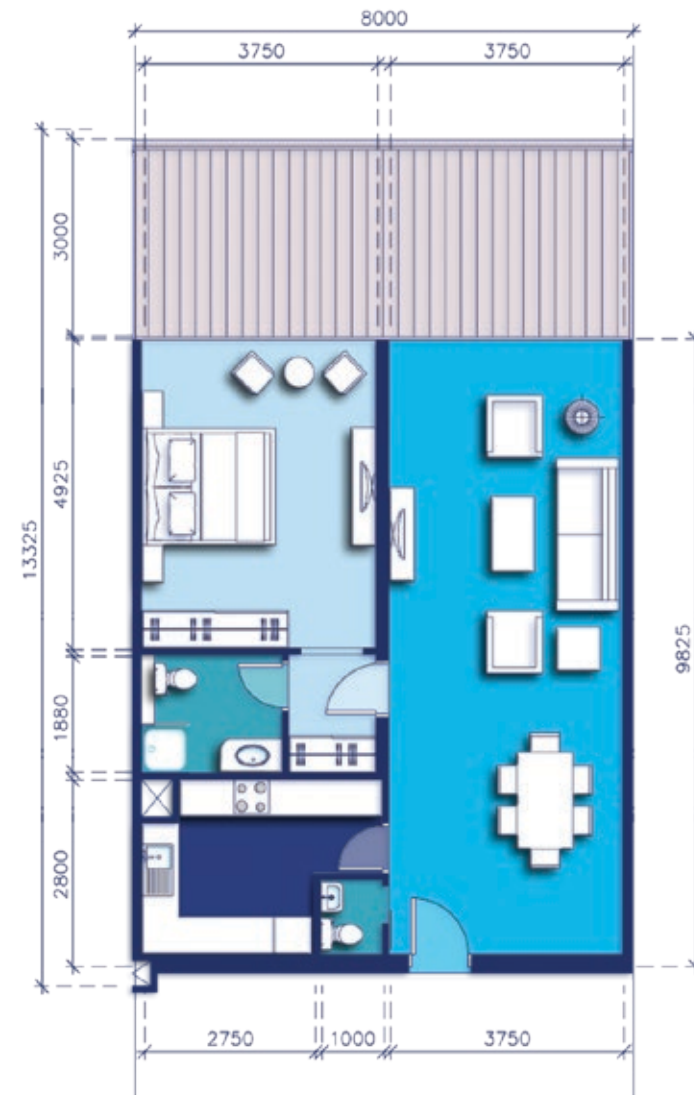
 BATHROOM

TERRACE	50 m ²
RECEPTION & DINING	42 m ²
BEDROOM	20 m ²
BATHROOM	5 m ²
KITCHEN	11 m ²
GUEST TOILET	2 m ²
AREA	80 m ²
AREA WITH TERRACE	130 m ²

Numbers, square footage and floor plans are approximate. Final dimensions, square footage and floor plans may vary.

1-BEDROOM C

TYPICAL APARTMENT



■ ENTRANCE LOBBY & RECEPTION

■ KITCHENETTE

■ BEDROOM & DRESSING

■ BATHROOM

TERRACE	25.5 m ²
RECEPTION & DINING	42 m ²
BEDROOM	20 m ²
BATHROOM	5 m ²
KITCHEN	11 m ²
GUEST TOILET	2 m ²
AREA	80 m ²
AREA WITH TERRACE	105.5 m ²

Numbers, square footage and floor plans are approximate. Final dimensions, square footage and floor plans may vary.

1-BEDROOM D

TYPICAL APARTMENT



■ ENTRANCE LOBBY & RECEPTION

■ KITCHENETTE

■ BEDROOM & DRESSING

■ BATHROOM

TERRACE	25.5 m ²
RECEPTION & DINING	42 m ²
BEDROOM	20 m ²
BATHROOM	5 m ²
KITCHEN	11 m ²
GUEST TOILET	2 m ²
AREA	80 m ²
AREA WITH TERRACE	105.5 m ²

Numbers, square footage and floor plans are approximate. Final dimensions, square footage and floor plans may vary.

2-BEDROOM A

CORNER APARTMENT



- ENTRANCE LOBBY & RECEPTION
- KITCHENETTE
- BEDROOM & DRESSING
- BATHROOM

TERRACE 1	50.5 m ²
TERRACE 2	26.5 m ²
AREA	77 m ²
RECEPTION & DINING	54.5 m ²
BEDROOM 1	22 m ²
BEDROOM 2	22 m ²
BATHROOM 1	5 m ²
BATHROOM 2	5 m ²
MAID'S ROOM	8 m ²
MAID'S BATHROOM	4 m ²
KITCHEN	23 m ²
GUEST TOILET	1.5 m ²
AREA	145 m ²
AREA WITH TERRACE	222 m ²

Numbers, square footage and floor plans are approximate. Final dimensions, square footage and floor plans may vary.

2-BEDROOM B

CORNER APARTMENT



- ENTRANCE LOBBY & RECEPTION
- KITCHENETTE
- BEDROOM & DRESSING
- BATHROOM

TERRACE 1	50.5 m ²
TERRACE 2	26.5 m ²
AREA	77 m ²
RECEPTION & DINING	54.5 m ²
BEDROOM 1	22 m ²
BEDROOM 2	22 m ²
BATHROOM 1	5 m ²
BATHROOM 2	5 m ²
MAID'S ROOM	8 m ²
MAID'S BATHROOM	4 m ²
KITCHEN	23 m ²
GUEST TOILET	1.5 m ²
AREA	145 m ²
AREA WITH TERRACE	222 m ²

Numbers, square footage and floor plans are approximate. Final dimensions, square footage and floor plans may vary.

2-BEDROOM C

CORNER APARTMENT



- ENTRANCE LOBBY & RECEPTION
- KITCHENETTE
- BEDROOM & DRESSING
- BATHROOM

TERRACE 1	25.5 m ²
TERRACE 2	26.5 m ²
AREA	52 m ²
RECEPTION & DINING	54.5 m ²
BEDROOM 1	22 m ²
BEDROOM 2	22 m ²
BATHROOM 1	5 m ²
BATHROOM 2	5 m ²
MAID'S ROOM	8 m ²
MAID'S BATHROOM	4 m ²
KITCHEN	23 m ²
GUEST TOILET	1.5 m ²
AREA	145 m ²
AREA WITH TERRACE	197 m ²

Numbers, square footage and floor plans are approximate. Final dimensions, square footage and floor plans may vary.

2-BEDROOM D

CORNER APARTMENT

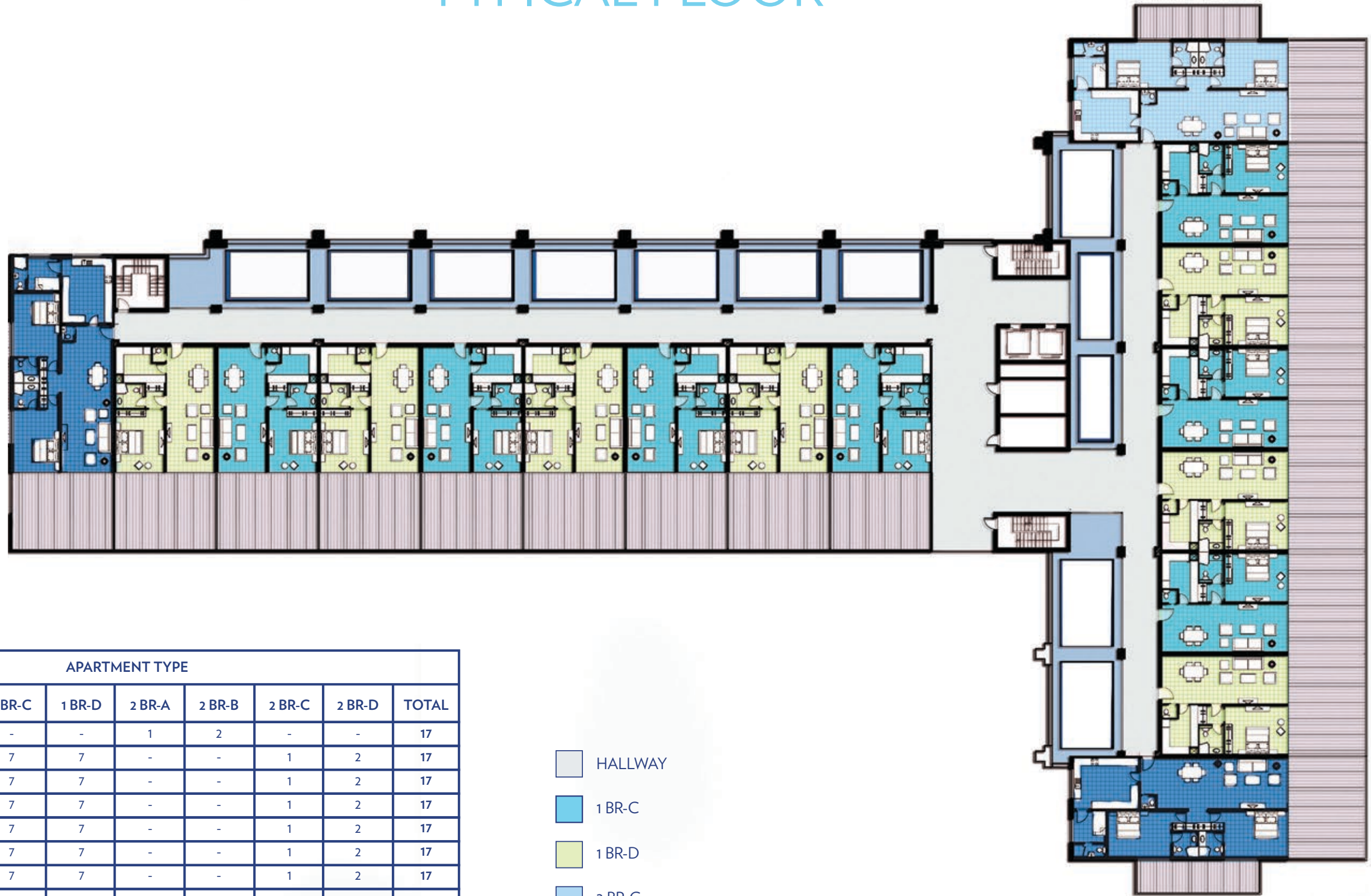


- ENTRANCE LOBBY & RECEPTION
- KITCHENETTE
- BEDROOM & DRESSING
- BATHROOM

TERRACE 1	25.5 m ²
TERRACE 2	26.5 m ²
AREA	52 m ²
RECEPTION & DINING	54.5 m ²
BEDROOM 1	22 m ²
BEDROOM 2	22 m ²
BATHROOM 1	5 m ²
BATHROOM 2	5 m ²
MAID'S ROOM	8 m ²
MAID'S BATHROOM	4 m ²
KITCHEN	23 m ²
GUEST TOILET	1.5 m ²
AREA	145 m ²
AREA WITH TERRACE	197 m ²

Numbers, square footage and floor plans are approximate. Final dimensions, square footage and floor plans may vary.

TYPICAL FLOOR



FLOOR	APARTMENT TYPE								TOTAL
	1 BR-A	1 BR-B	1 BR-C	1 BR-D	2 BR-A	2 BR-B	2 BR-C	2 BR-D	
1 st	7	7	-	-	1	2	-	-	17
2 nd	-	-	7	7	-	-	1	2	17
3 rd	-	-	7	7	-	-	1	2	17
4 th	-	-	7	7	-	-	1	2	17
5 th	-	-	7	7	-	-	1	2	17
6 th	-	-	7	7	-	-	1	2	17
7 th	-	-	7	7	-	-	1	2	17
8 th	-	-	7	7	-	-	1	2	17
9 th	-	-	7	7	-	-	1	2	17
10 th	-	-	7	7	-	-	1	2	17
TOTAL	7	7	63	63	1	2	9	18	170

- HALLWAY
- 1 BR-C
- 1 BR-D
- 2 BR-C
- 2 BR-D

Numbers, square footage and floor plans are approximate. Final dimensions, square footage and floor plans may vary.

The developer reserves the right to make revisions. All the measurements and drawings are approximate. This information is subject to change without notice. Do not scale drawings. Artistic renderings, landscaping and images are for illustrative purposes only and are subject to change without notice. February 2018.

ACCESS TO THE WORLD-CLASS AMENITIES OF PALM JUMEIRAH

Azure Residences is ideally located on Palm Jumeirah offering easy access to a wide range of nearby amenities, including retail destinations, restaurants, cafés and leisure venues.



CLUB VISTA MARE

Located within walking distance of Azure Residences, this premium waterfront dining and beach club facility features seven restaurants, with indoor and outdoor seating, and offering a variety of cuisines.



AL ITTIHAD PARK

Al Ittihad Park is the UAE's first indigenous park containing more than 60 varieties of trees and plants. The park is accessible 24/7, offering peaceful shaded areas for relaxation surrounded by a 3.2 km jogging track.



GOLDEN MILE GALLERIA

Located adjacent to Al Ittihad Park, Golden Mile Galleria is a shopping, dining and entertainment hub with retail stores, cafés, a Fitness First Platinum Club, medical centre, nurseries and a supermarket.

A SOUGHT-AFTER RESIDENTIAL LOCATION

Azure Residences is conveniently located on the eastern shoreline of the world-famous Palm Jumeirah. Strategically positioned close to the entrance of the island, it provides easy access to Dubai's business and leisure districts. The delightful residences are also situated within walking distance of the Palm Monorail and within easy reach of the Dubai Tram and Dubai Metro.

If you are interested in buying a home at Azure Residences, please call +971 4 390 3333, email info@nakheel.com or visit: www.azureresidences.ae



NAKHEEL THE MASTER DEVELOPER

Nakheel is one of the world's leading developers and a major contributor to realising the vision of Dubai for the 21st century: to create a world class destination for living, business and tourism. Nakheel continues to deliver and enhance an iconic portfolio of innovative landmark projects in Dubai across the residential, retail, hospitality and leisure sectors.

Our master developments include Palm Jumeirah, The World, Deira Islands, Jumeirah Islands, Jumeirah Village, Jumeirah Park, Jumeirah Heights, The Gardens, Discovery Gardens, Al Furjan, Warsan Village, Dragon City, International City, Jebel Ali Gardens and Nad Al Sheba. Together, these span more than 15,000 hectares and currently provide homes for over 270,000 people.

Nakheel has more than 24,000 residential units under construction or in the pipeline.

Nakheel's current and future retail project portfolio covers 17.3 million square feet of leasable space. Developments include Ibn Battuta Mall, Dragon Mart 1 and 2, Golden Mile Galleria, Nakheel Mall, The Pointe, Deira Mall, Deira Islands Night Souk, Warsan Souk, Al Khail Avenue, The Circle Mall, Nad Al Sheba Mall and Discovery Gardens Mall, as well as major extensions to Dragon Mart (renamed Dragon City) and Ibn Battuta Mall. The retail profile also includes several neighbourhood community centres, known as Nakheel Pavilions.

Our growing hospitality project portfolio comprises 17 hotels and serviced apartment developments with nearly 6,000 rooms and hotel apartments between them at various locations in Dubai, including Palm Jumeirah, Deira Islands, Ibn Battuta Mall, Jumeirah Village and Dragon City. Two are currently open and operational, with the rest at various stages of construction and development.





NAKHEEL

P.O.Box 17777 / Dubai / United Arab Emirates
Tel: +971 4 390 3333 / Fax: +971 4 390 3314
www.azureresidences.ae