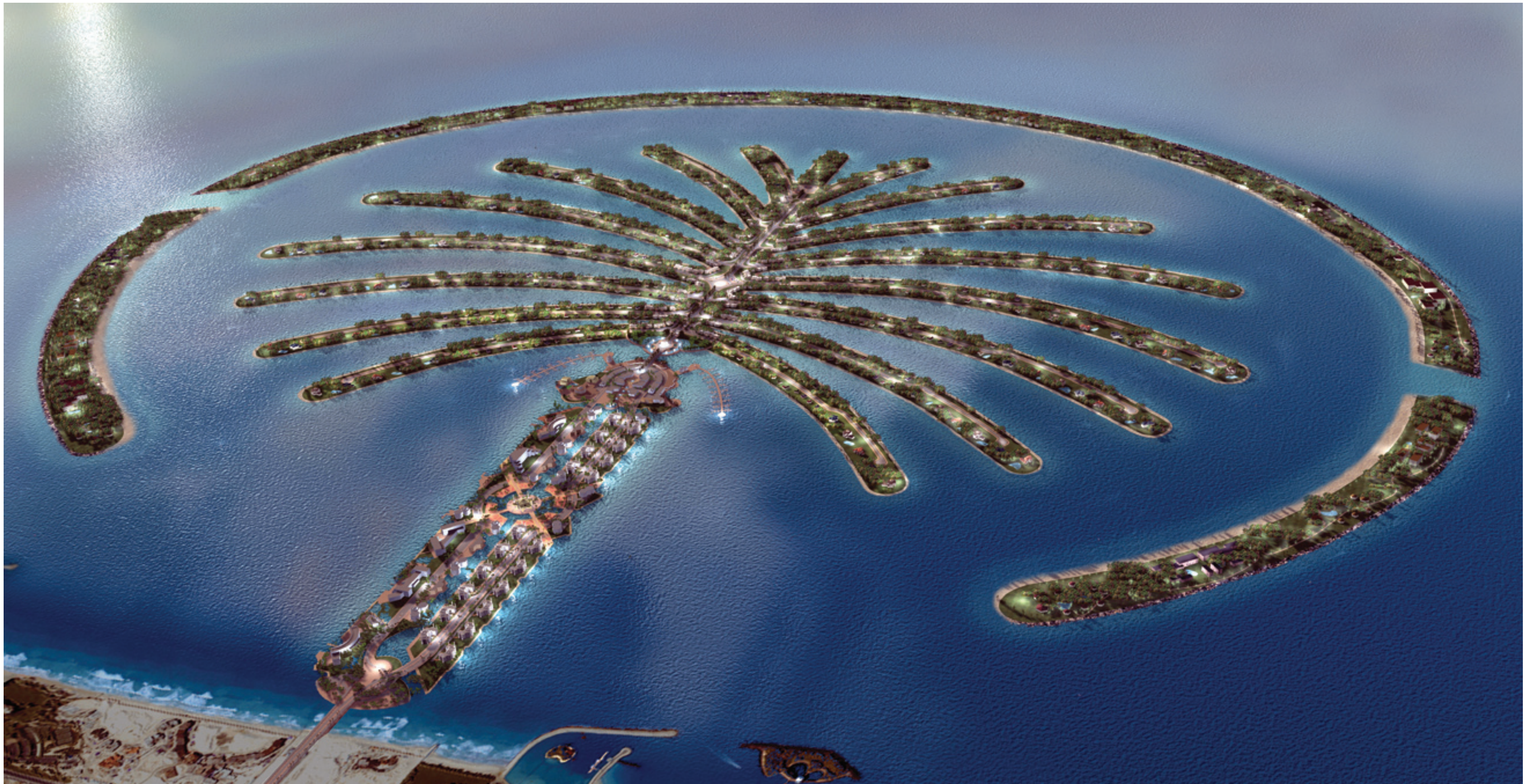




SHORELINE APARTMENTS





The Ultimate Investment

Not just a timeless symbol of abundance, the design of the fronds on The Palm allows for unparalleled beachfront property with stunning, unobstructed ocean views. Enjoy water sports in the Arabian Sea or in your own swimming pool. Watch the sunset from a private beach or take advantage of an exclusive clubhouse for residents. Here, an ancient icon meets the most modern of lifestyles, creating the ultimate investment opportunity.



Space for exceptional living

The Palm is about unlimited possibilities. In addition to the Signature Villas, Garden Homes, and Canal Cove Townhomes, spacious beach-front Shoreline Apartments in a choice of floor plans are available on The Trunk, convenient to unparalleled shopping, fine dining and world-class entertainment.



Club Houses on The Palm

The Club Houses on The Palm cater to Shoreline Apartment residents with an array of fitness activities. Each of the four apartment blocks will have access to its own exclusive health club, featuring the latest fitness equipment, large swimming pools, children's playground and restaurants. Whether relaxing or invigorating, the Club Houses promise stunning Gulf views and experiences that can only be found on The Palm.



SHORELINE APARTMENT ELEMENTS



Technology and Security

- Infrastructure for high-speed internet access with “future technology-ready” features
- Apartments ready for state of the art cable TV and telephones
- Apartments ready for state of the art security system
- Quality switches and outlets
- Security Guard/Janitor in each building

External Features and Palm Services

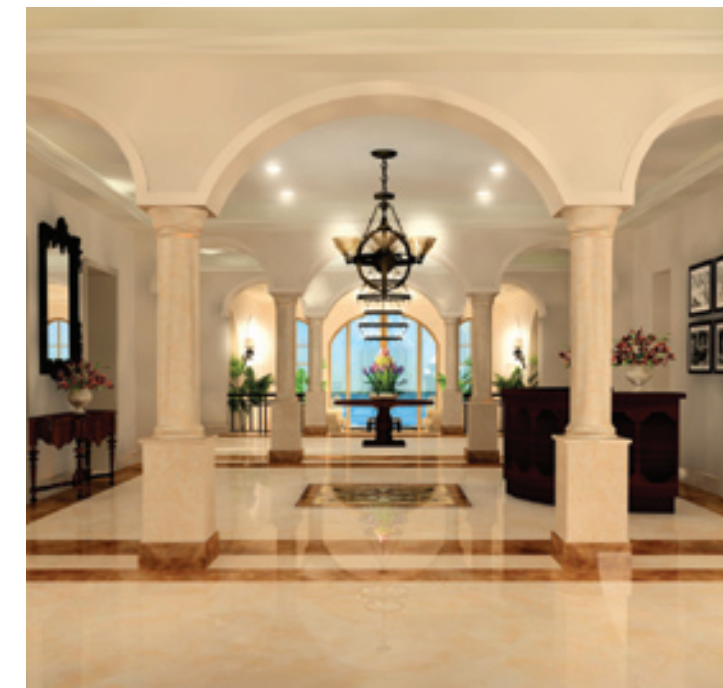
- Largely underground parking facilities
- Gardens and landscape maintained by The Palm

Shoreline Apartments Health and Recreation Clubs

- 5 health clubs (1 for 4 apartment blocks)
- All located along the seashore
- All managed by The Palm, including pool maintenance
- All with ground + 1 floor
- All with large swimming pool
- All with modern gym
- All with children’s playground
- All with restaurants

Shopping

The Village Centre, conveniently located near the Canal Cove Townhomes will be fully equipped with supermarkets, laundry, beauty parlours, barber salons, tailors and all other services required for daily living.



SHORELINE APARTMENT ELEMENTS

Rooms

- Stunning water views from all apartments
- Vitreous/Ceramic floor tiles
- Solid core entry door with security view hole
- Walk in closets with shelves
- Insulated and double glazed windows
- Tiled balconies
- Distinctive overhead lighting

Bathroom

- Quality vanities with granite tops
- Ceramic tiled flooring and walls
- Combination of ceramic tiles and moisture resistant paint
- Selected ceramics sanitary ware with matching accessories
- Mirrors and vanity lighting in Master Bathroom
- Ceramic accessory package to match bathroom design
- Safety glass shower enclosures
- High quality mixer taps



SHORELINE APARTMENT ELEMENTS



Kitchen

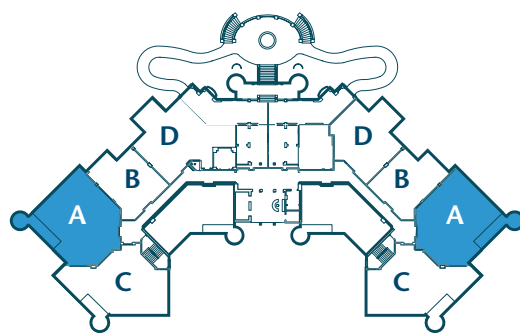
- Highest quality kitchen cabinetry
- Vitreous floor tiles
- Ceramic tiled splash backs
- Selected granite tops
- Twin bowl stainless steel sink with quality mixer tap
- Space and services provided for all major appliances
- Recessed lighting

SHORELINE APARTMENT

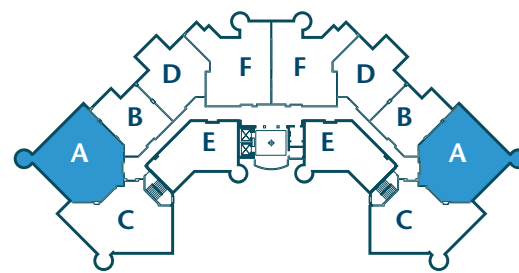


UNIT A
 3 Bedroom
 200 sq. m.
 2,152 sq. ft.

Shoreline Apartments



GROUND FLOOR

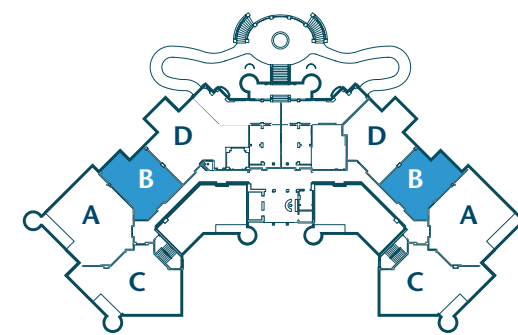


APARTMENT LEVEL

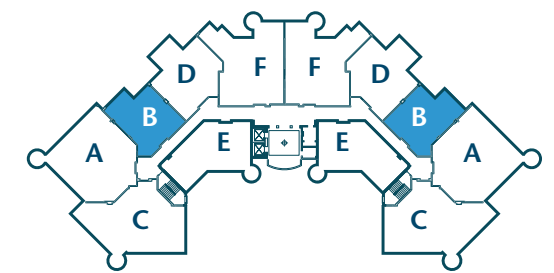
Actual usable floor space may vary from the value stated. The developer reserves the right to make revisions. All measurements, drawings, and materials are approximate. This information subject to change without notice. Do not scale drawing.

UNIT B
 1 Bedroom
 109 sq. m.
 1,173 sq. ft.

Shoreline Apartments



GROUND FLOOR

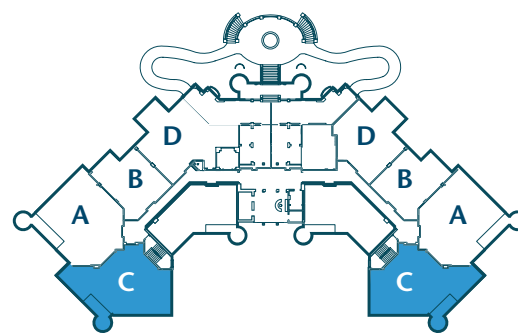


APARTMENT LEVEL

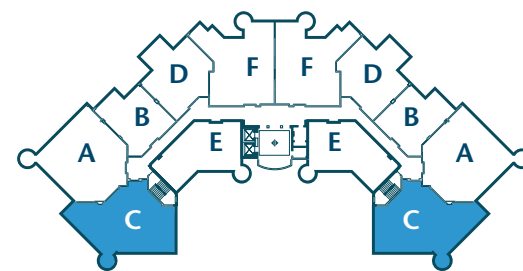
Actual usable floor space may vary from the value stated. The developer reserves the right to make revisions. All measurements, drawings, and materials are approximate. This information subject to change without notice. Do not scale drawing.

UNIT C
 3 Bedroom
 197 sq. m.
 2,120 sq. ft.

Shoreline Apartments



GROUND FLOOR

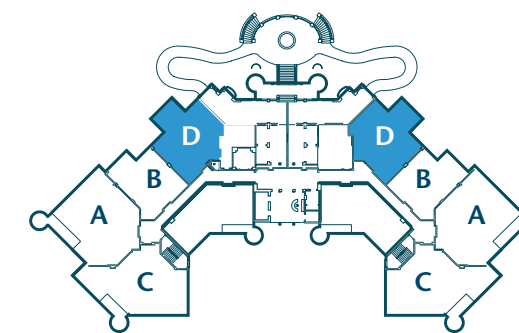
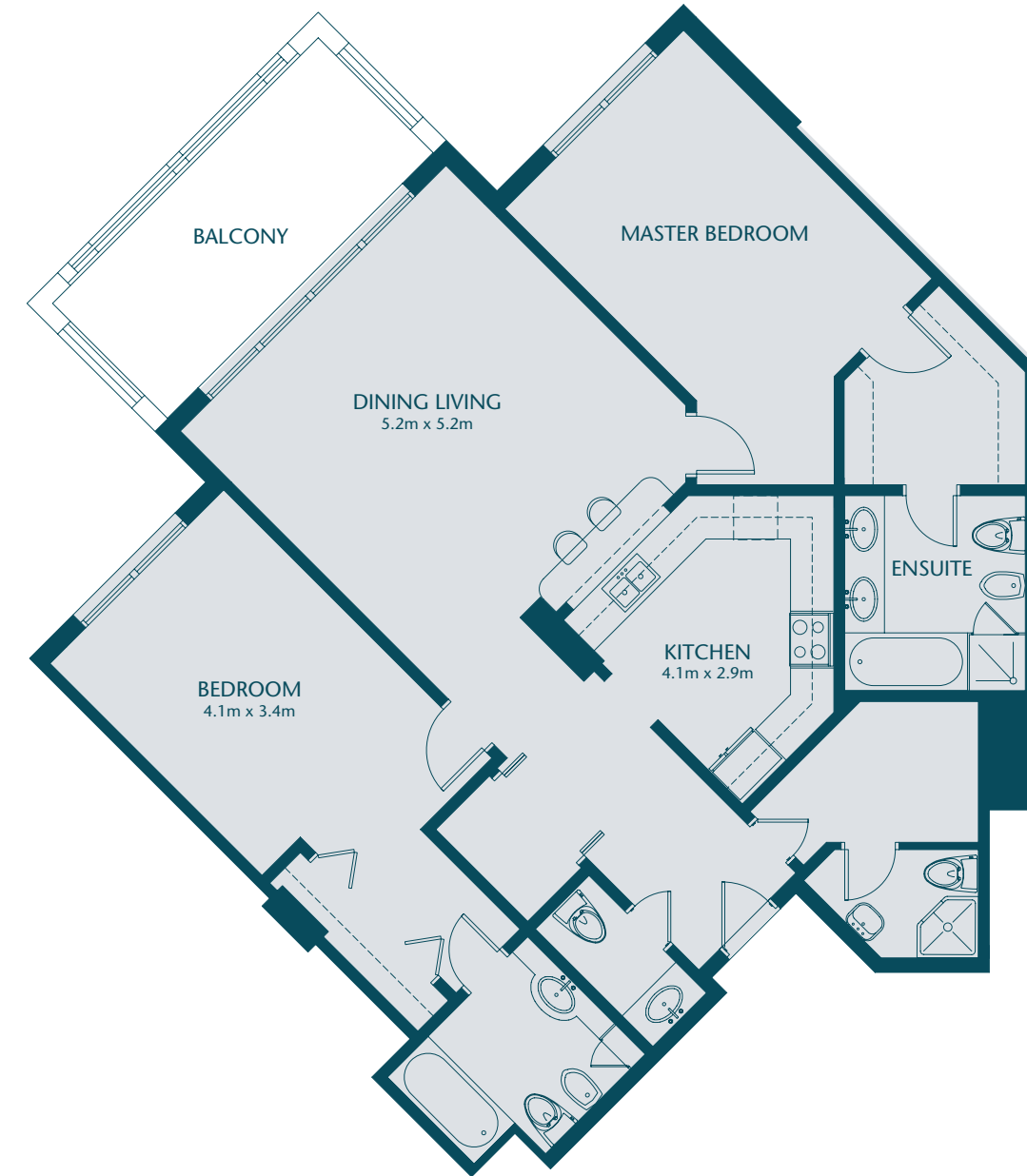


APARTMENT LEVEL

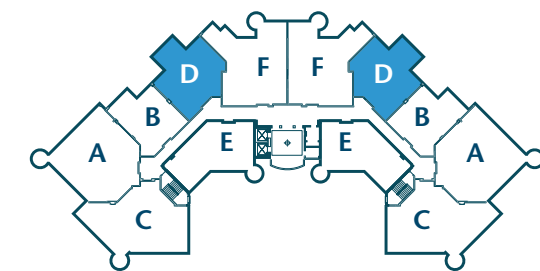
Actual usable floor space may vary from the value stated. The developer reserves the right to make revisions. All measurements, drawings, and materials are approximate. This information subject to change without notice. Do not scale drawing.

UNIT D
 2 Bedroom
 137 sq. m.
 1,474 sq. ft.

Shoreline Apartments



GROUND FLOOR

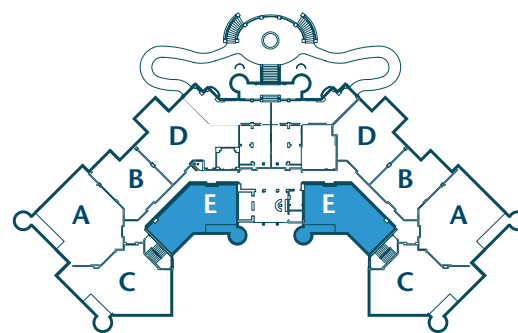
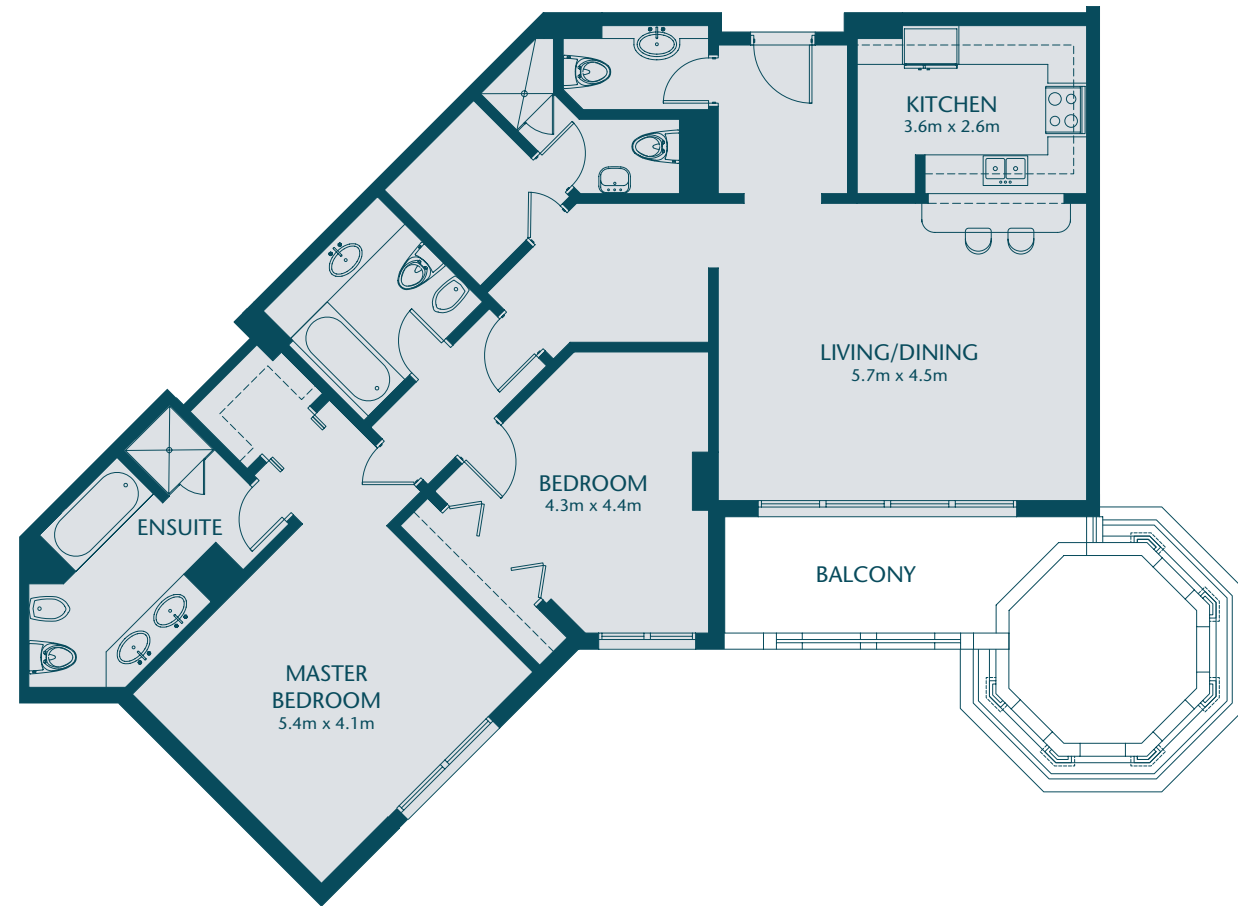


APARTMENT LEVEL

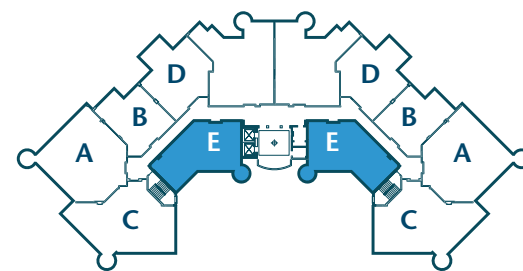
Actual usable floor space may vary from the value stated. The developer reserves the right to make revisions. All measurements, drawings, and materials are approximate. This information subject to change without notice. Do not scale drawing.

UNIT E
 2 Bedroom
 139 sq. m.
 1,496 sq. ft.

Shoreline Apartments



GROUND FLOOR

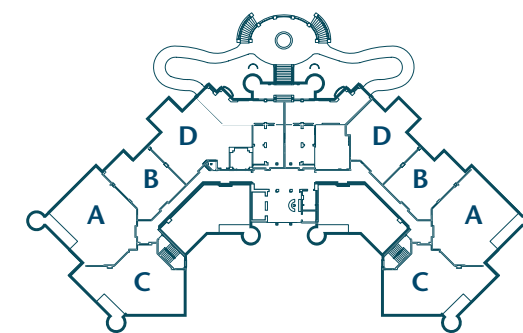


APARTMENT LEVEL

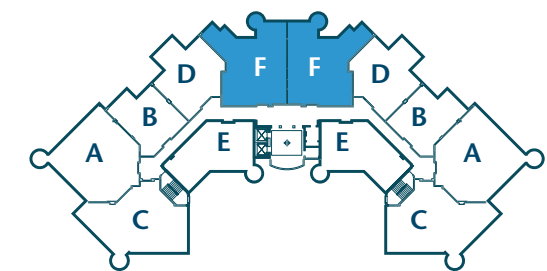
Actual usable floor space may vary from the value stated. The developer reserves the right to make revisions. All measurements, drawings, and materials are approximate. This information subject to change without notice. Do not scale drawing.

UNIT F
 2 Bedroom
 180 sq. m.
 1,937 sq. ft.

Shoreline Apartments



GROUND FLOOR



APARTMENT LEVEL

Actual usable floor space may vary from the value stated. The developer reserves the right to make revisions. All measurements, drawings, and materials are approximate. This information subject to change without notice. Do not scale drawing.

PENTHOUSE UNIT G

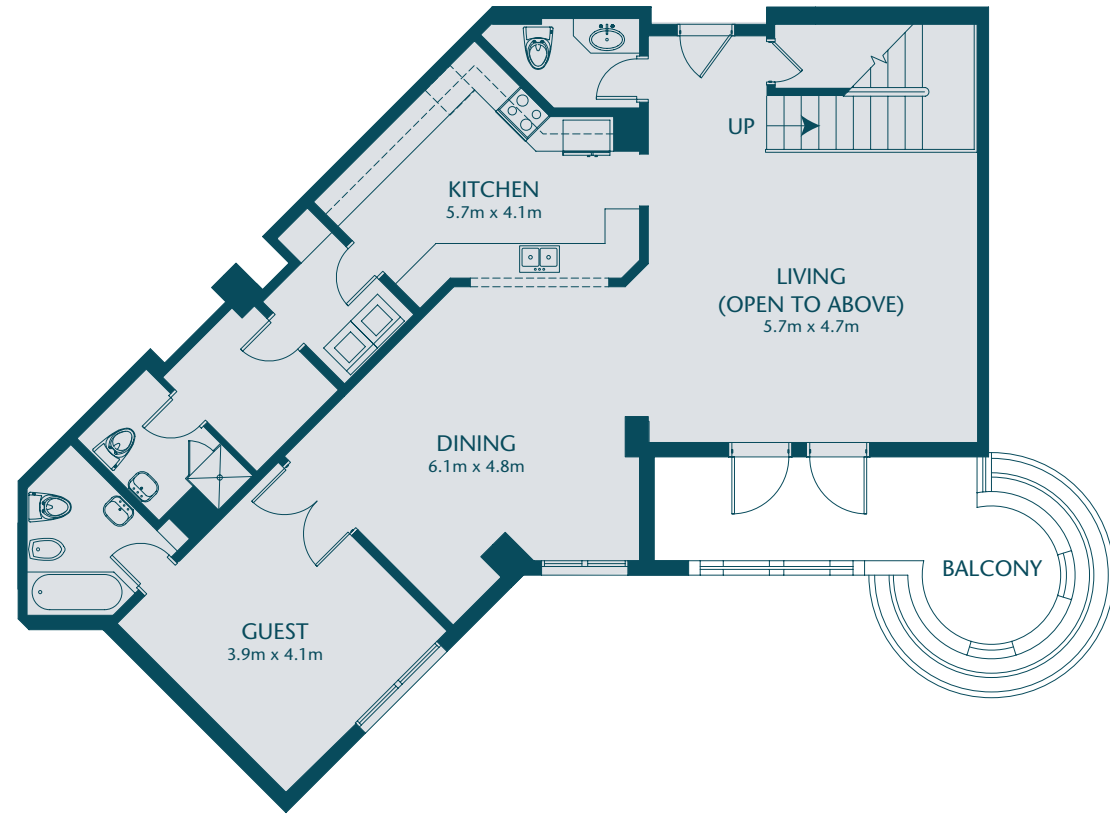
Lower Level

4 Bedroom

462 sq. m.

4,971 sq. ft.

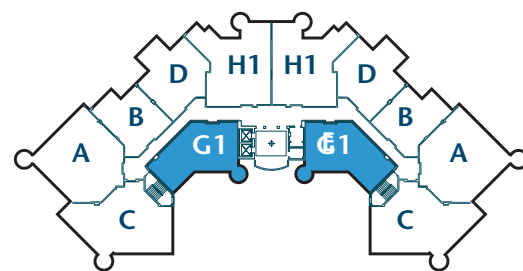
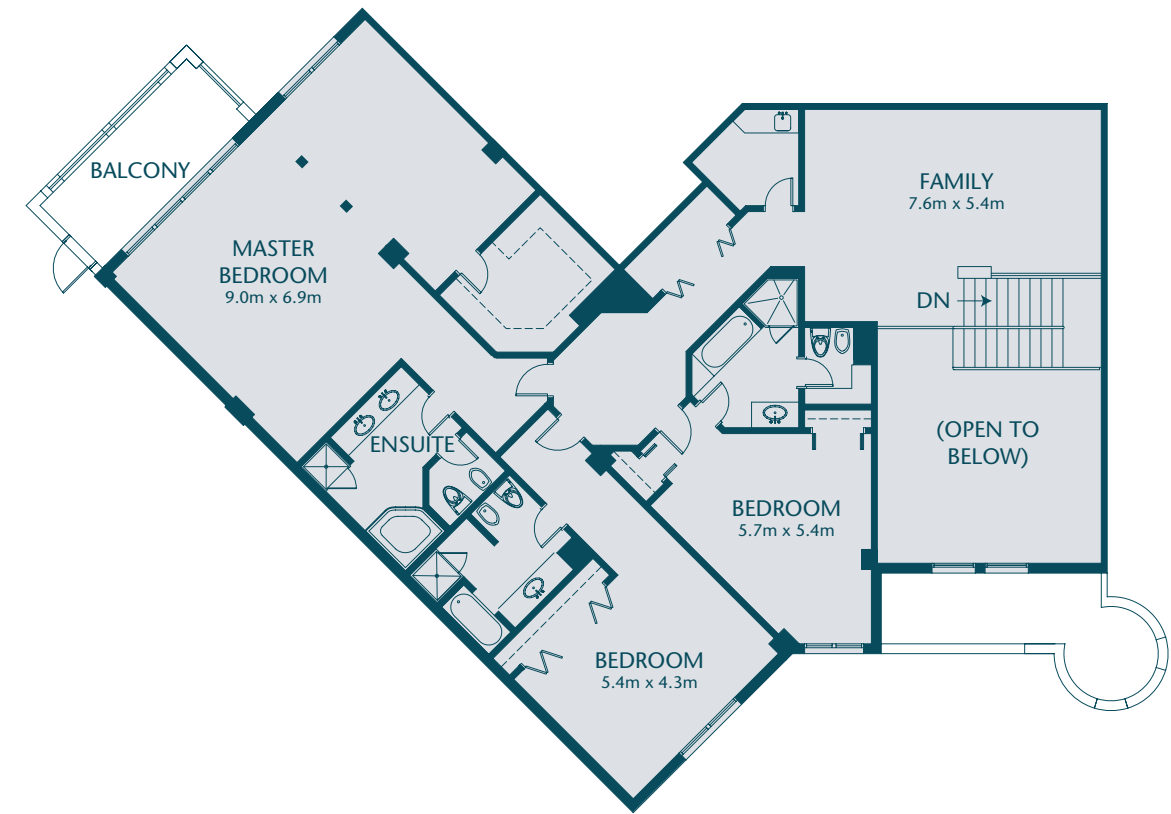
Shoreline Apartments



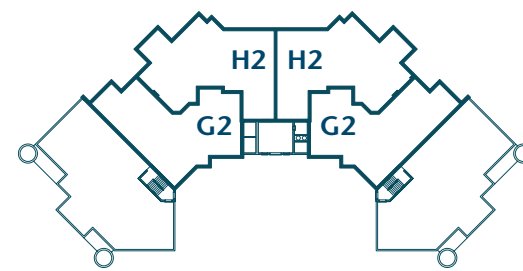
PENTHOUSE UNIT G

Upper Level

Shoreline Apartments

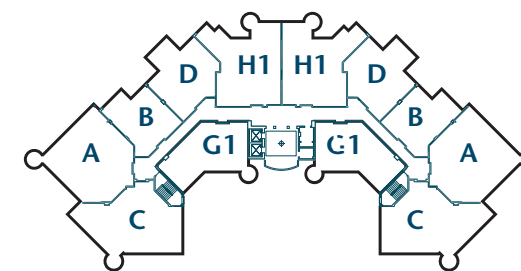


PENTHOUSE LEVEL 1

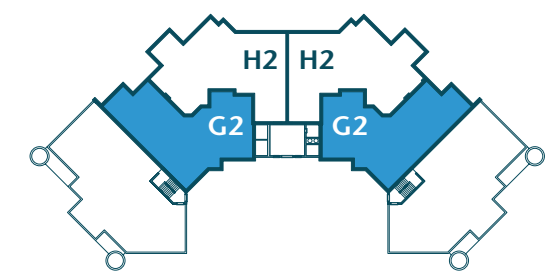


PENTHOUSE LEVEL 2

Actual usable floor space may vary from the value stated. The developer reserves the right to make revisions. All measurements, drawings, and materials are approximate. This information subject to change without notice. Do not scale drawing.



PENTHOUSE LEVEL 1



PENTHOUSE LEVEL 2

Actual usable floor space may vary from the value stated. The developer reserves the right to make revisions. All measurements, drawings, and materials are approximate. This information subject to change without notice. Do not scale drawing.

PENTHOUSE UNIT H

Shoreline Apartments

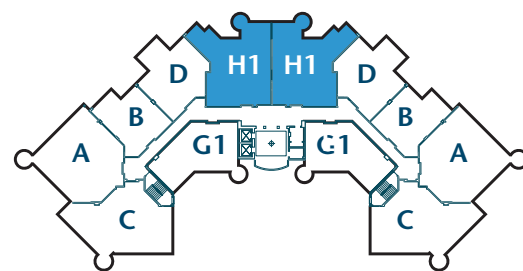
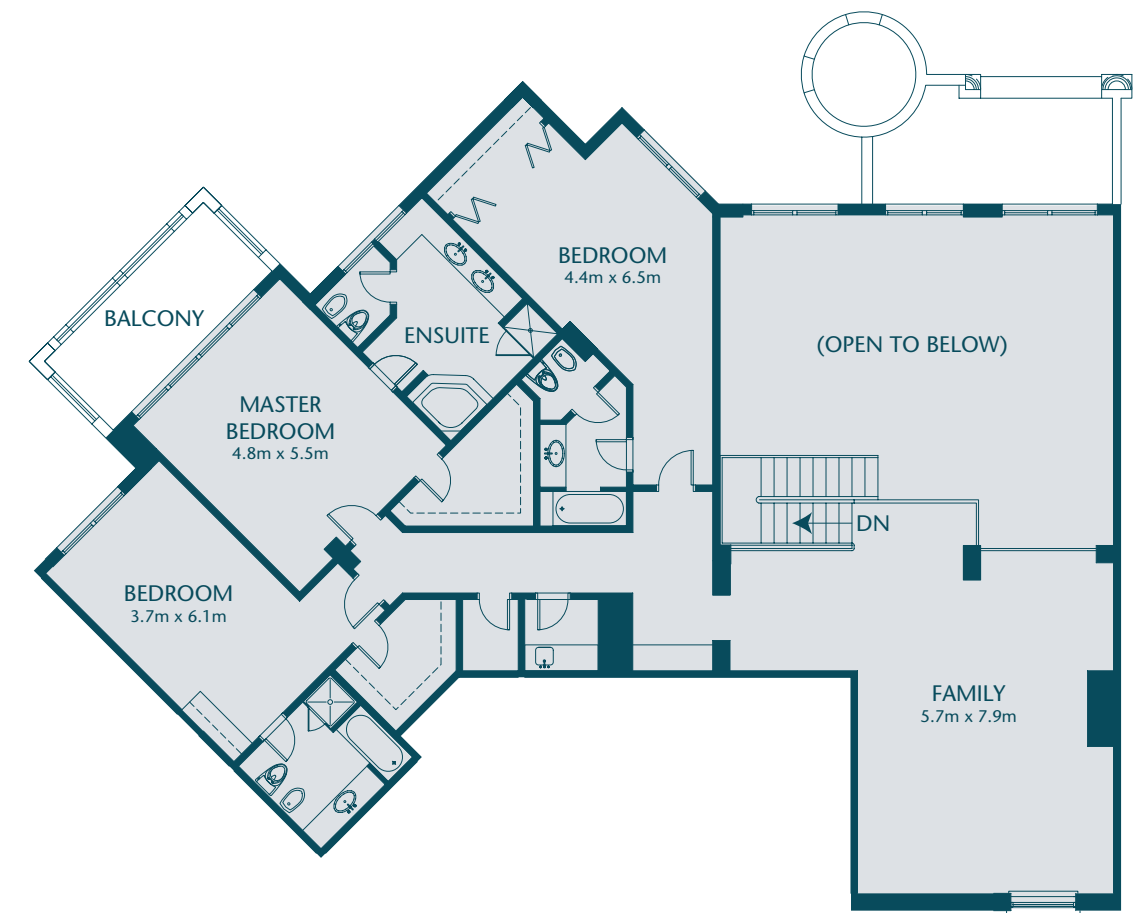
Lower Level
 4 Bedroom
 524 sq. m.
 5,638 sq. ft.



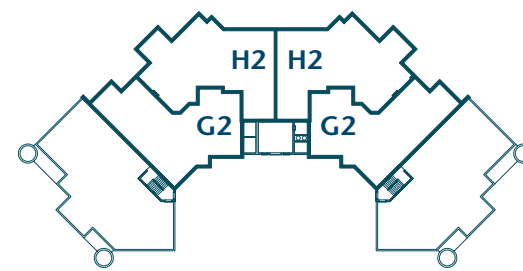
PENTHOUSE UNIT H

Shoreline Apartments

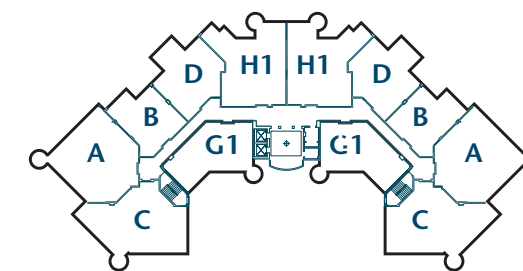
Upper Level



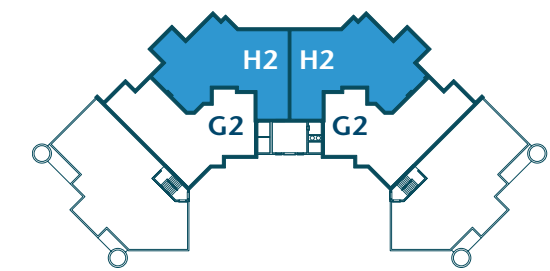
PENTHOUSE LEVEL 1



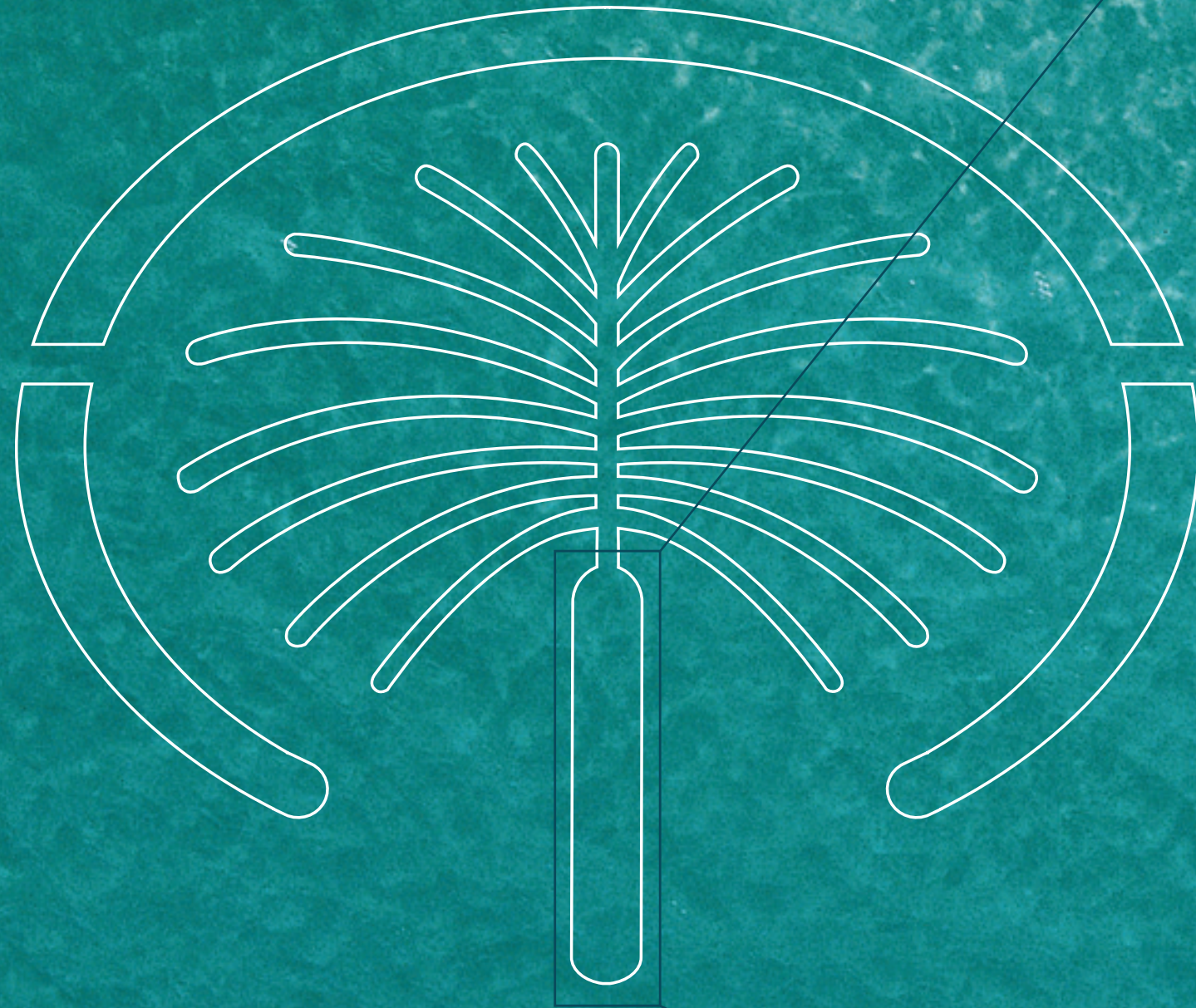
PENTHOUSE LEVEL 2



PENTHOUSE LEVEL 1



PENTHOUSE LEVEL 2



AL HABOOL B20
10 Floors

AL ANBARA B18
11 Floors

AL SARROOD B16
11 Floors

AL HALLAWI B14
12 Floors

AL TAMR B12
12 Floors

AL SHAHLA B10
11 Floors

ABU KEIBAL B8
10 Floors

JASH HAMAD B6
10 Floors

AL HAMRI B4
11 Floors

AL KHUSHKAR B2
12 Floors

AL DAS B19
10 Floors

AL MSALLI B17
11 Floors

AL NABAT B15
11 Floors

AL HASEER B13
12 Floors

PALM TERRACE B11
12 Floors

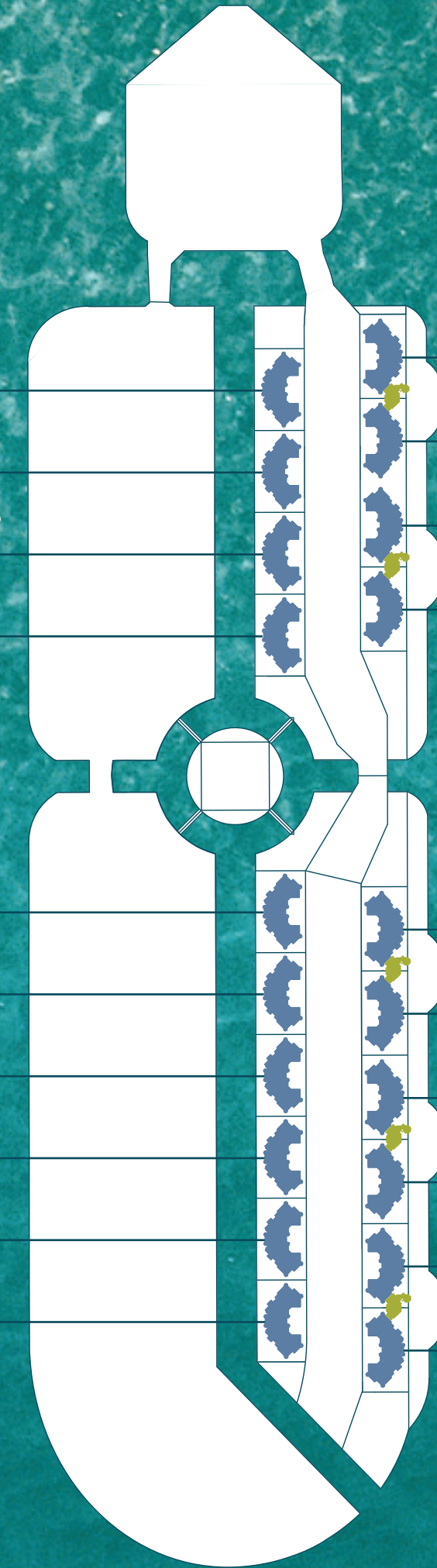
AL HATIMI B9
11 Floors

JASH FALQA B7
10 Floors

AL SULTANA B5
10 Floors

AL DABAS B3
11 Floors

AL BASRI B1
12 Floors





THE PALM
P.O. Box 17777 Dubai
United Arab Emirates

Telephone +971 4 3903333
Facsimile +971 4 3903314
Toll Free 800 5554 (UAE)

Email info@thepalm.ae
www.thepalm.ae