

ENHANCEMENT WORKS UPDATE

THIRD EDITION

Dear residents,

Welcome to the third edition of the bimonthly bulletin updates on ongoing community improvements in Jumeirah Islands. In this edition we will update on ongoing community improvements in landscaping and in the treatment of the lakes, and we will shed light on the daily operations that take place across Jumeirah Islands to ensure the safety and comfort of the community members. In our next edition, we will focus on community usage charges and provide an overview for the billing cycles for 2022 and 2023.

While we continue to focus on enhancing your living experience at **Jumeirah Islands**, we welcome your suggestions for improvement. Our community management team regularly meets with residents onsite and in our offices to address any queries residents may have. We also invite all owners to engage with the Community Management team on general community matters by signing up to be part of one of our many Focus Groups dedicated to enhancing dialogue with the Jumeriah Islands community. The Focus Groups cover community matters such as Events, gardening, landscaping, pets, sports activities, sustainability and more. Please register your interest for the Focus Groups via this [link](#).

We kindly request all owners to ensure to update their email address by contacting us at Help@NakheelCommunities.com if you have not received the previous bi-monthly bulletin update by email.

Best regards,

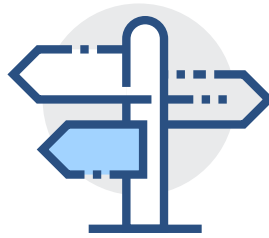
Nakheel Community Management

RECENTLY COMPLETED IMPROVEMENTS

Infrastructure



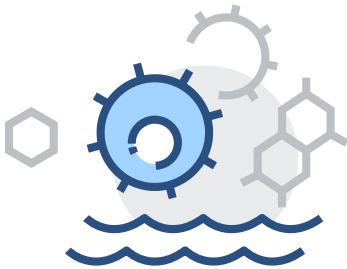
Installation of 8 subsurface bubble aerators in lake between Clusters 8 & 10



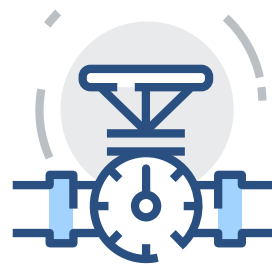
New wayfinding signage at the **entrance** of every **cluster**



Installation of No Parking signage at the Cluster 22 & 24 junction



Continuing Effective Microorganisms (EM) Lakes Treatment to improve water quality and reduce algae and foam formation on all lakes



Commissioning of dewatering system between Clusters 7 & 12; 5 wet wells at a depth of 12m below ground level to reduce rising ground water levels

Landscaping

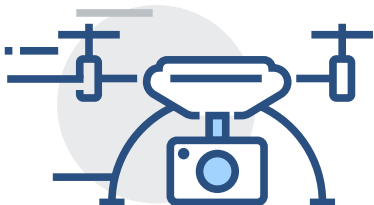


Mobilisation of Phase 2 Landscaping Improvements focusing on main driveway and the right-of-way. Works commenced from Gate 1 to Roundabout 1. Completion by the end of January 2023

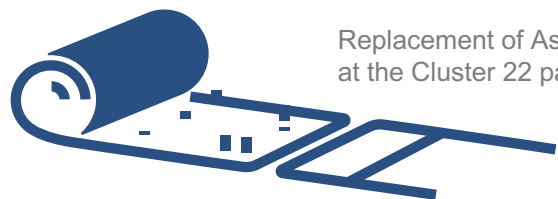


Markings for plantation completed for Fruit Farm to be located between Clusters 19 & 20.

Facilities



Drone survey of master community completed



Replacement of Astroturf at the Cluster 22 park

IMPROVEMENTS IN PROGRESS

Landscaping



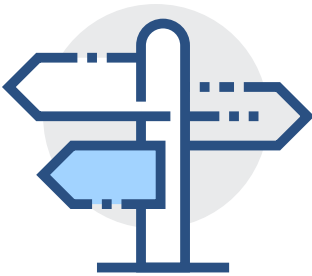
Phase 2 of landscaping enhancement works at Gate 1 and Gate 2 in progress. Ground cover and additional greenery plantation will take place mid-September.

Facilities



Minor renovations at tennis courts (repainting of furniture, fencing and general aesthetic refreshments). However, the courts are still operational for residents

Infrastructure & Landscaping



Wayfinding signage replacement on **main road**. Completion by end of September.



Infrastructure work for 21 additional aerators for Lakes Treatment program. Completion in late October.



Assessment of additional speed humps requirements



Painting of replaced fencing along Jumeirah Islands lakes



Mobilisation for landscaping works between Clusters 26 & 27.

PLANNED IMPROVEMENTS

Landscaping



Mid-September start of landscaping works between Clusters 26 & 27

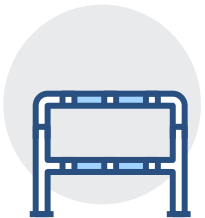


Continuation of Phase 2 landscaping improvements on centre median and right-of-way

Infrastructure



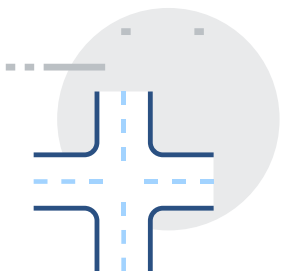
Installation of additional speed humps on main driveway



U-shaped bollards installation at T-junctions close to lakes in October

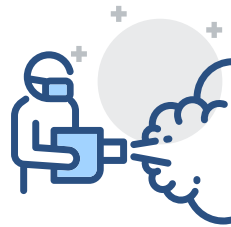


Epoxy coating of footpath by kids' playground in Cluster 22 park



Road and curb stone markings at junctions

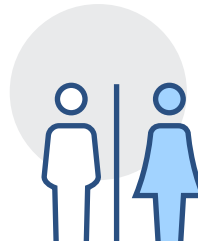
Facilities



Our team is working proactively in order to increase frequency of mosquito fogging and larvicide treatment



Design for renovation of gate houses at the three Jumeirah Islands entrances



Revamping of washroom facilities at the Cluster 22 park. In parallel, cleaning frequency has already been increased.



Installation of new community rules and regulations signage scheduled for November

COMMUNITY IMPROVEMENTS SNAPSHOT



Tennis courts – courtside furniture refreshment



Tennis courts – fencing repairs and paint touchups in progress



Phase 2 of Landscaping Enhancements focusing on the centre median and right-of-way landscaping is in progress at Gate 1.



Phase 2 landscaping works in progress at Gate 2. Plantation of ground cover will commence in mid September.



Astroturf replacement at Cluster 22 park - before



Astroturf replacement at Cluster 22 park - completed

COMMUNITY IMPROVEMENTS SNAPSHOT



Painting of junction islands around the community (Before)



Painting of speed humps and pedestrian crossings will take place starting mid-September (After)



Installation of No Parking signage at Cluster 22 & 24 junction to ensure free flow of vehicular traffic



Cleaning of waterfall by Cluster 24 (Ongoing)



Installation of 8 subsurface diffusion aeration systems in the lake between Clusters 8 & 10. Location of aerators is indicated by black-coloured decorative ducks (for maintenance reasons).



Surface bubbling is expected when aeration systems are switched on. 21 additional aerators of various types will be installed by the end of October.



Jumeirah Islands

OVERVIEW OF DAILY OPERATIONS AT JUMEIRAH ISLANDS

THIRD EDITION

In addition to community improvements that are in full force at Jumeirah Islands, there is a team of service providers and staff on site that enable daily operations such as cleaning of roads and parks, landscaping, garbage collection, mechanical, electrical and plumbing (MEP) servicing, lighting maintenance, signage, road and road marking maintenance and security services. The snapshot below provides an overview into the daily activities that take place.

Infrastructure

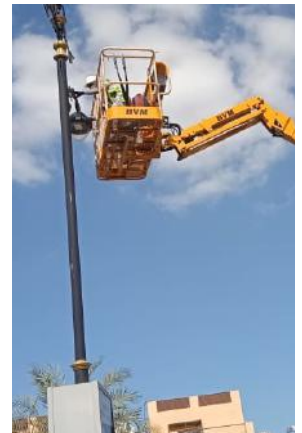
- 143 staff members serve the community's infrastructure assets, including dewatering systems, water features, street lighting, MEP assets, roads and lakes circulation.
- 24-hour manned operations of 4 vacuum sewage pumps and main sewerage lifting pump room, along with 2 irrigation pump rooms, fire hydrant pump rooms and 4 seawater pump rooms.
- Lighting technicians and inspectors are on call 24 hours.



Lake pumps & infrastructure maintenance



Mechanical, Electrical & Plumbing Maintenance



Street lighting
Maintenance

Landscaping

- The appointed landscaping contractor is responsible for daily cleaning, trimming and general maintenance of landscaped areas. The onsite landscaping team is operational 6 days a week.
- According to season and various plants' growth patterns, the landscaping maintenance schedule is set, and adjusted accordingly.
- Specialised landscaping improvements, such as the planting of the Washingtonia palm trees and the enhancements along the centre median, are being carried out.



Facilities

- The community management team supervises the facilities management service providers, including the external cleaning, waste management and play areas and sports facilities maintenance contractors.
- Waste management services are provided on a daily basis, with recyclables and green waste collections now occurring every 2 days. Bulky items can be disposed of through Imdaad by calling 800-8200.
- Sweeping of all roads and footpaths, and cleaning of various master community assets, including benches, bridges, railings, litter bin picking and dog waste bag dispenser refilling is carried out by a team of 26 cleaners, who are on site 7 days a week.
- The sports and kids play area facilities are maintained through a prescheduled preventative maintenance schedule, as well as on call out basis as per requirements.
- Pest control treatments are conducted on a monthly basis and rodent bait stations are serviced weekly. Mosquito fogging and larvicide treatments take place between October and May according to requirements.





Did you know?

- Mosquitos tend to lay eggs in stagnant and shallow water or on damp soil, with female mosquitos laying up to 300 eggs at a time. It takes only 7 days to mature from an egg to a full-fledged blood-sucking mosquito.
- Mosquito wings beat 300-600 times per second, and they have a flight radius of up to 5km.
- Due to their relatively poor eyesight, mosquitos find it easier to see targets with darker clothing.

Tips and recommendations for keeping mosquitos at bay:

- Kindly ensure any stagnant water in your backyard is removed, including water in bird baths, manholes, storage boxes, kids play structures and around garden hoses. Some mosquito species require as little as one tablespoon of water to lay their eggs.
- Kindly trim landscaping to avoid creating nesting sites for mosquitos.
- Please use insect-repellant when exercising or generally sweating as the lactic acid in our sweat is preferred by mosquitos.
- Please burn citronella candles safely to ward off mosquitos.
- Please use fly screens whenever possible and ensure there are no holes on the fly screens, especially in less visible areas such as the corners or edging.
- Kindly dispose waste frequently and keep trash bins closed
- Kindly avoid sitting outside during sunset and sunrise as mosquitos are most active during these times.

COMMUNITY ENGAGEMENT

Community Awareness Campaign initiated in July 2022. Click [here](#) to visit the Jumeirah Islands Info Page.

WE WELCOME YOU TO JOIN OUR COMMUNITY FOCUS GROUPS TO ENHANCE COMMUNITY ENGAGEMENT

Sign up for a variety of Jumeirah Islands Focus Groups [here](#) and engage with your Community Management team on a range of topics.