

ENHANCEMENT WORKS UPDATE

FIFTH EDITION

Dear residents,

Welcome to the fifth edition of the bimonthly bulletin updates on ongoing community improvements in Jumeirah Islands. In previous editions we have referenced the ongoing landscaping improvements, operational updates, community engagement initiatives and community usage charge billing cycles. In this update the focus will be on the lakes which cover approximately 66% of the surface area of Jumeirah Islands, and the intensive Lakes Treatment program that forms an integral part of the overall community revamp initiatives.

In line with our effort to enhance the community experience at **Jumeirah Islands**, we encourage Jumeriah Islands residents to engage with the Community Management team, exchange ideas and provide your valuable feedback by signing up to one of the many Focus Groups via this [link](#).

Please contact us for any feedback or suggestions via our 24x7 call centre on 800-NAKHEEL or by writing to us at Help@NakheelCommunities.com. The relevant team members would be more than happy to meet with residents requiring one on one meetings in our office, or at the community.

We kindly request all owners to ensure to update their email address by contacting us at Help@NakheelCommunities.com if you have not received the previous bi-monthly bulletin update by email.

Best regards,

Nakheel Community Management

LANDSCAPING IMPROVEMENTS – AREA BETWEEN CLUSTERS 26 & 27



BEFORE ENHANCEMENT WORKS

Area between Clusters 26 & 27 – landscaping enhancement preparation works completed. The picture above shows the initial status of the area in July 2022.



18,000 metres of drip tubes used in the installation of irrigation, and 315 m² of new footpaths added to connect to existing walkways.



440 m³ of gravel has been used in the overall 8,200 m² area of land between clusters 26 & 27.



50 Washingtonia palms of 3.5m height have been replanted in this former sand patch.



2,310 m² of grass has been planted in the area between clusters 26 & 27.

LANDSCAPING IMPROVEMENTS – FRUIT FARM BY CLUSTERS 19 & 20



Fruit Farm between Clusters 19 & 20 – initial condition (June 2022)



Fruit Farm – 90 trees of 11 different varieties planted. The trees will take 2 to 3 years to mature.



310 m³ of gravel installed to balance landscaping beautification with irrigation water constraints.



Gazebo installed for residents' enjoyment. Additional benches to be installed under the trees to provide quiet reading spaces.



Additional plantation completed to complement the Fruit Farm

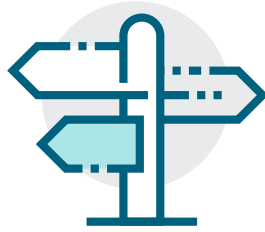
**COMMUNITY EVENT
INAUGURATING FRUIT
FARM TO BE HELD
IN DECEMBER WHEN
COOLER WEATHER
ALLOWS FOR
OUTDOOR ENJOYMENT**

IN PROGRESS & PLANNED IMPROVEMENTS

Infrastructure



Activation of new aerators across various lakes



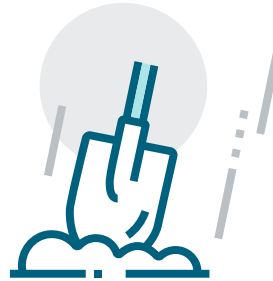
Readjustment of existing traffic signage to enhance traffic safety throughout the community



Installation of three new pedestrian humps to assist with safe usage of the community's walking areas



Continuing Effective Microorganisms (EM) Lakes Treatment to improve water quality and reduce algae and foam formation on all lakes



Repair of main road asphalt damages

Landscaping



Landscaping improvements along centre median and adjacent right-of-way is in progress. Completion by the end of January 2023.

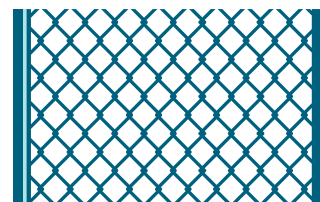


Landscaping enhancement planning in progress for sandy patches throughout the community. Works to commence in early 2023 and to be completed by end of 2023.

Facilities



Design and tendering of new security gate houses is in progress. Installation planned for Q2 2023.

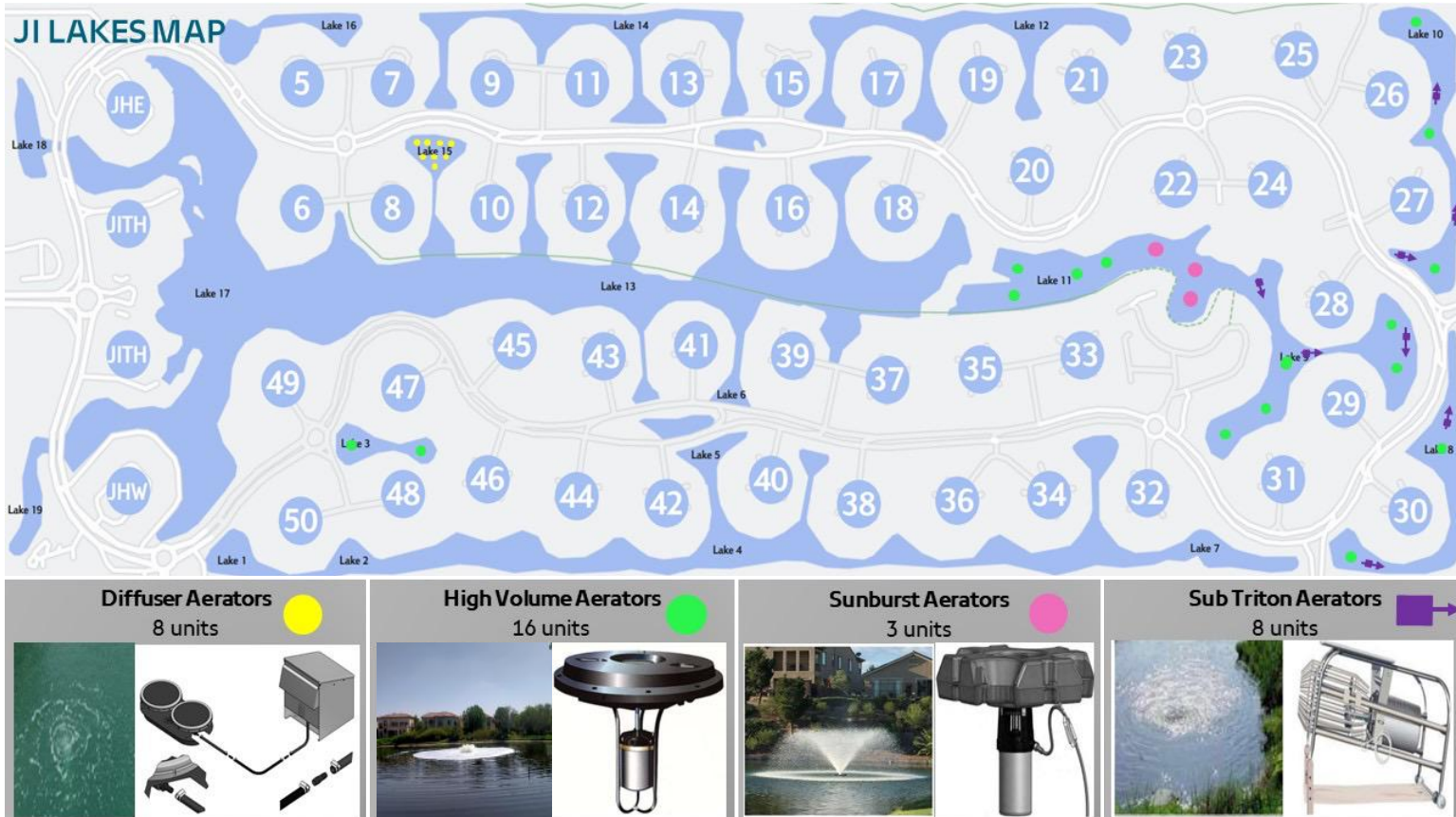


Jumeirah Islands Community Tennis Tournament on November 19. Details on how to register your interest to participate will be released in the first week of November.

LAKES TREATMENT PROGRAM UPDATES

Jumeirah Islands has 19 lakes holding 1.8m cubic metres of sea water, which cover a surface area exceeding 600,000m². Sea water is pumped in from the Dubai Marina shores through a network of pipes and circulated throughout the community back towards the discharge lake, which then pumps the water back out to the sea. As lake bodies do not benefit from the currents and natural circulation like seawater, circulation is aided with 15 equalizer pipes, 2 pressure pipes, 8 gravity pipes, 13 waterfalls and new aerators.

The map below indicates the location of the three types of aerators that have been installed in Jumeriah Islands, and some of which are pending activation.



All 35 aerators are expected to be activated during the first week of November, and the impact of the aeration systems will be to:

- Increase dissolved oxygen in the lakes, thereby supporting aquatic life, and promoting healthier decomposition of sludge
- Allow thorough sludge decomposition in line with Effective Microorganisms (EM) treatment methodology by aiding circulation of water
- With the long-term and overwhelmingly positive impact of the aerators, it is anticipated that minor side effects will also be evident, including:
 - Mild odours during the first few hours of operation
 - Evident foaming during the first few operations of the aerators, which will dissipate within a few hours.

Foam, naturally occurring in all water bodies, is formed when the tension of water is low as this easily allows the formation of bubbles. The tension of water is currently reduced due to presence of nutrients and is expected to be increased after several more months of combined biological EM treatments, coupled with aeration systems' operation. In the meantime, foam formation and collection is controlled with turbidity barrier nets and anti-foaming solutions.

LAKES TREATMENT PROGRAM UPDATES

Our intention is to start up the aerators with minimal impact on residents. In this case you may notice aerators running late in the evening and/or early in the morning until running times are increased.

As the aerators are being commissioned, they will be run for 1 hour on the first day of operation, increasing to 2 hours daily for one week. The running time of the aerators will continue to increase each week. This is to aid the acclimatisation of aquatic life to the increase in oxygen levels. Mild foaming on the lakes is expected during running of aerators. This will reduce as running times increase and water quality continues to improve.

The running period of aerators will vary per lake. This is being monitored daily until we achieve optimal running times and subsequent ecological balance of the lakes.

We look forward to operation of all systems and continued improvement to the ecology of the lakes in Jumeirah Islands and the overall enhancement of the central features of the Jumeirah Islands community.

Lake 10



Lake 11



Lake 3



Lake 15



Lake 8



Lake 8



Lake 9



Lake 9



Lake 10



In addition to the running of aeration systems, regular Effective Microorganisms (EM) and mudballs application will continue across all Jumeirah Islands lakes, in accordance with the schedule that is communicated to residents at the beginning of every month.

**WE WELCOME
YOU TO JOIN OUR
COMMUNITY
FOCUS GROUPS
TO ENHANCE
COMMUNITY
ENGAGEMENT**

Please sign up for a variety of Jumeirah Islands Focus Groups [here](#) and engage with your Community Management team on a range of topics.

NAKHEEL

Community Management



help@nakheelcommunities.com



@NakheelCommunities



800 Nakheel



@NKLCommunities



Nakheel Communities



My Nakheel App

